



INDOFINE Chemical Company, Inc.

121 Stryker Lane, Bldg. 30, Suite 1 • Hillsborough, NJ 08844 • U.S.A.

Phone: (908) 359-6778 • FAX: (908) 359-1179

website: www.indofinechemical.com

e-mail: chemical@indofinechemical.com

CERTIFICATE OF ANALYSIS

Catalog Number: 06-2021

Product Name: **ELEMICIN**

CAS Number: [487-11-6]

Lot Number: 2310866

Chemical Formula: C₁₂H₁₆O₃

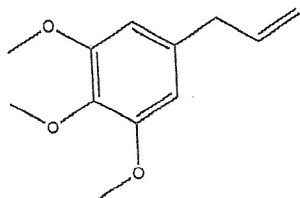
Molecular Weight: 208.26

Appearance: Yellow oily liquid

Water Content: 0.9%

Storage: Store at 0-8°C. Protect from light.

Purity(HPLC): 97.4%



Prepared by:
Ramesh Mandadi
Ramesh Mandadi
Director of Operations

Reviewed and Approved by:
Sujata Moton
Sujata Moton
VP



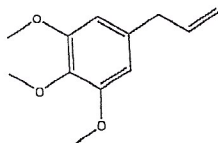
INDOFINE Chemical Company, Inc.

121 Stryker Lane, Bldg. 30, Suite 1 • Hillsborough, NJ 08844 • U.S.A.

Phone: (908) 359-6778 • FAX: (908) 359-1179

website: www.indofinechemical.com

e-mail: chemical@indofinechemical.com



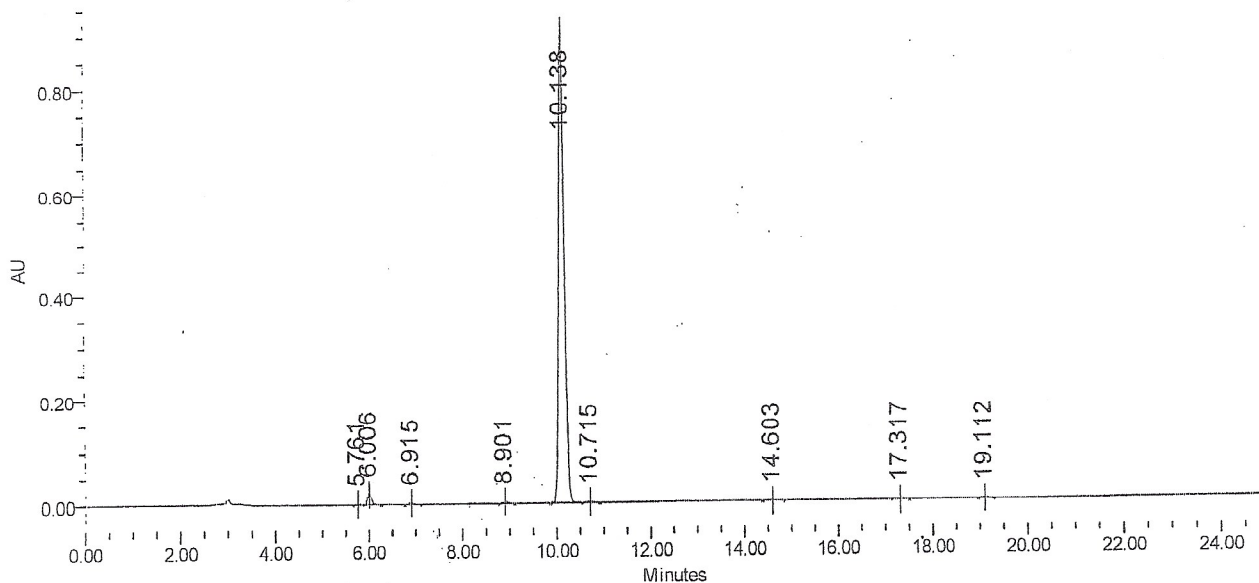
HPLC ANALYSIS

Catalog No.: 06-2021
Product Name: Elemicin
Lot No.: 2310866

SAMPLE INFORMATION

Sample Name: Elemicin
Sample Type: Unknown
Vial: 11, 10
Injection #: 1
Injection Volume: 10.00 ul
Run Time: 25.0 Minutes

Acquired By:
Sample Set Name
Acq. Method Set: Elemicin
Processing Method: sample
Channel Name: PDA Ch1 205nm@4.8nm
Proc. Chnl. Descr.: PDA Ch1 205nm@4.8nm



Peak Results

	Name	RT	Area	% Area	Height (µV)	USP Plate Count	USP Resolution
1		5.761	3827	0.05	708	17705.84	
2		6.006	118150	1.53	18891	21849.41	1.50
3		6.915	16156	0.21	2535	23157.49	5.36
4		8.901	26212	0.34	3384	29688.23	10.58
5		10.138	7504116	97.44	911411	34897.35	5.83
6		10.715	15174	0.20	1831	34176.47	2.68
7		14.603	3888	0.05	440	102901.52	11.67
8		17.317	4739	0.06	489	38363.14	8.04
9		19.112	8611	0.11	978	72278.82	8.48
10							